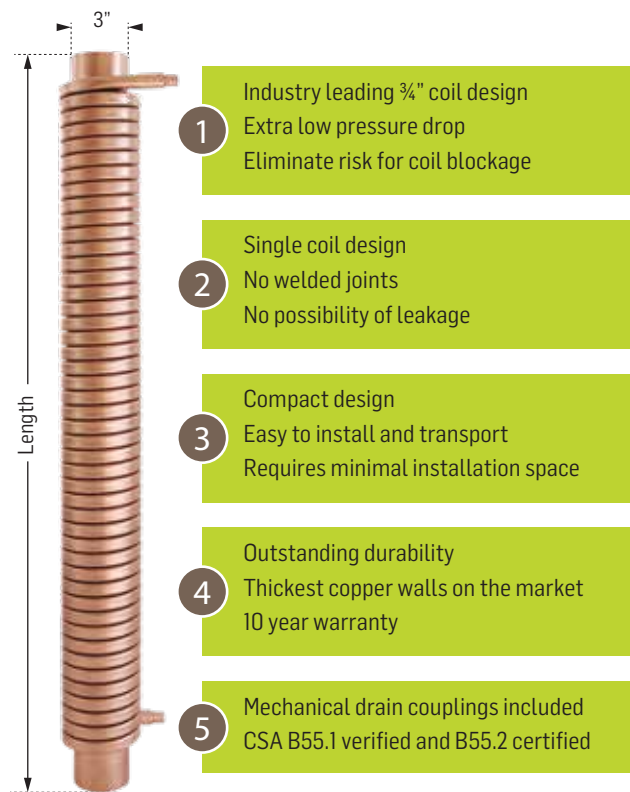


## 3" diameter specification sheet

The ThermoDrain is the latest technology in Drain Water Heat Recovery. Its unique design provides outstanding savings that can be attributed to its superior performance and durability. With its exclusive features, the ThermoDrain is simply the best technology available today!



**1** Industry leading ¾" coil design  
Extra low pressure drop  
Eliminate risk for coil blockage

**2** Single coil design  
No welded joints  
No possibility of leakage

**3** Compact design  
Easy to install and transport  
Requires minimal installation space

**4** Outstanding durability  
Thickest copper walls on the market  
10 year warranty

**5** Mechanical drain couplings included  
CSA B55.1 verified and B55.2 certified



### TECHNICAL CHARACTERISTICS

- Potable water tube: Made from Type "L" copper, certified to ASTM B88;
- Minimal copper coil diameter is ¾ inch (19mm), profiled in a "D" shape to maximize heat transfer and minimize pressure drop;
- Approved maximum pressure rating of 150 lbs/in<sup>2</sup> (1035 kPa);
- Potable water connections are the required diameter to connect to the water feed for the application. [Standard diameters: ¾, 1, 1¼, 1½ inch (19, 25, 32, 38 mm)].

### DRAIN CENTER TUBE

- Made from DWV copper, conforms to ASTM 306;
- The nominal diameter is the same as the drainage pipe on which the device is installed. [Standard diameters: 3, 4 inches, (75, 100mm)].

### CERTIFICATIONS

The length of the heat exchanger is accordance with engineering drawings. [Standard length: 30 to 100 inches (762 to 2540 mm)]

The thermal effectiveness of the heat exchanger must be verified to CSA B55.1 (12). [All models]

The construction of the heat exchanger must be certified to CSA B55.2 (12). [All models]

The factory installed PEX fittings are certified to CSA B137.5 and ASTM F1807

### INSTALLATION

The drain water heat exchanger will be integrated into the plumbing system using mechanical joints. The heat recovery unit will be installed vertically, as recommended by the manufacturer.

### ACCEPTED PRODUCT

ThermoDrain models TDXXXB from EcoInnovation Technologies inc. [See technical drawing sheet].

## 3" diameter specification sheet



### Intertek Test Data Sheets

#### Original Test Data

Page 7 of 8

Client: ECO Innovations Technology Inc. Engineer: Blaine Serio  
 Job No.: G101070334 Tested By: Pocholo Laforteza Date: 24-April-2013

Product: Drain Water Heat Recovery Pipe Reviewed By: Rick Curkeet Date: June 17<sup>th</sup>, 2013

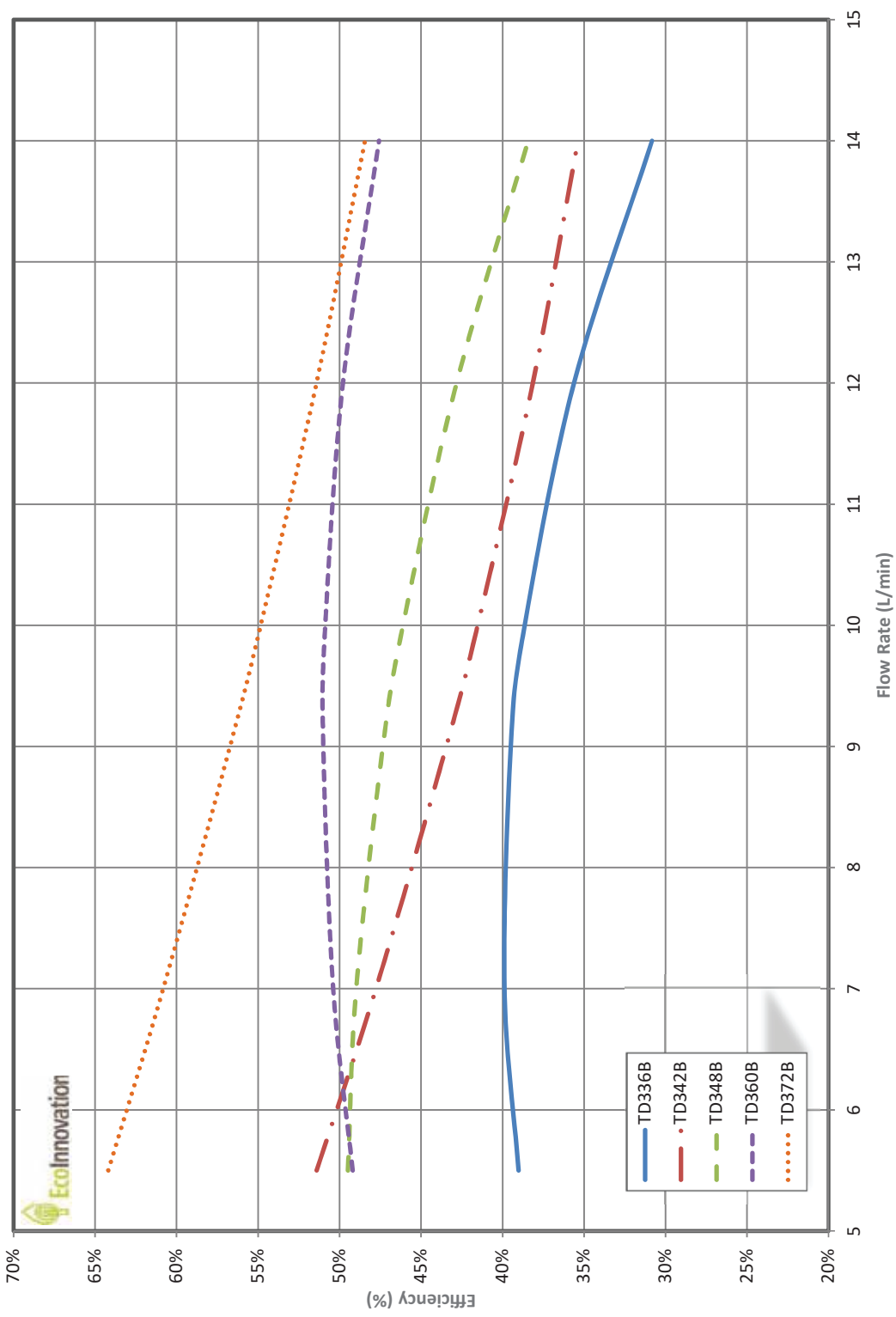
Model No.: TD336B, TD342B, TD348B, TD360B, TD372  
 Standard(s): CSA B55.1 issued: 2012/07/01 Test Method for Measuring Efficiency and Pressure Loss of Drain Water Heat Recovery Units

Sample Control Number(s): 134000131, 134000129, 134000126, 134000119, 134000120

Model Number	Diameter (in)	Diameter (mm)	Length (in)	Length (mm)	Calculated Efficiency (%) @ 9.5 L/min	Calculated Pressure Loss (psi) @ 9.5 L/min	Heat Recover (kW)	Pressure Loss (kPa)	Mass (kg)
TD336B	3	76.2	36	914.4	39.2%	1.3	7.0	9.1	10.0
TD338B	3	76.2	38	965.2	40.4%	1.4	7.2	9.7	10.4
TD340B	3	76.2	40	1016	41.6%	1.5	7.5	10.3	10.9
TD342B	3	76.2	42	1066.8	42.8%	1.6	7.7	10.9	11.2
TD344B	3	76.2	44	1117.6	43.9%	1.7	7.9	11.5	11.9
TD346B	3	76.2	46	1168.4	45.0%	1.8	8.1	12.1	12.4
TD348B	3	76.2	48	1219.2	46.0%	1.8	8.2	12.7	13.0
TD350B	3	76.2	50	1270	47.0%	1.9	8.4	13.3	13.4
TD352B	3	76.2	52	1320.8	48.0%	2.0	8.6	13.9	14.0
TD354B	3	76.2	54	1371.6	48.9%	2.1	8.8	14.5	14.6
TD356B	3	76.2	56	1422.4	49.8%	2.2	8.9	15.0	15.2
TD358B	3	76.2	58	1473.2	50.7%	2.3	9.1	15.6	15.8
TD360B	3	76.2	60	1524	51.5%	2.3	9.2	16.2	16.5
TD362B	3	76.2	62	1574.8	52.3%	2.4	9.4	16.7	17.0
TD364B	3	76.2	64	1625.6	53.0%	2.5	9.5	17.3	17.7
TD366B	3	76.2	66	1676.4	53.7%	2.6	9.6	17.8	18.3
TD368B	3	76.2	68	1727.2	54.4%	2.7	9.7	18.4	18.9
TD370B	3	76.2	70	1778	55.0%	2.7	9.9	18.9	19.6
TD372B	3	76.2	72	1828.8	55.6%	2.8	10.0	19.5	20.3

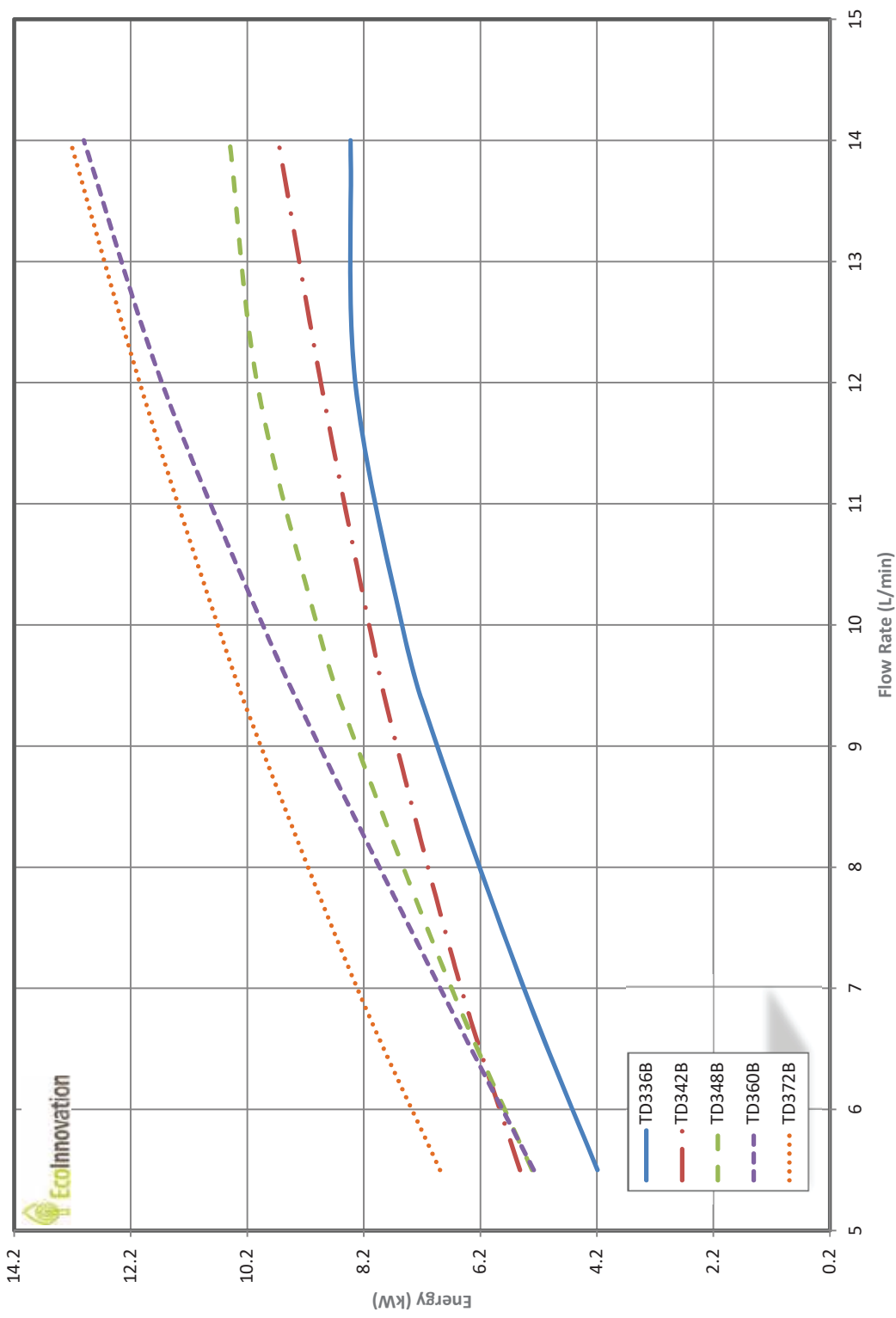


## 3" diameter specification sheet *Efficiency vs water flow rate*



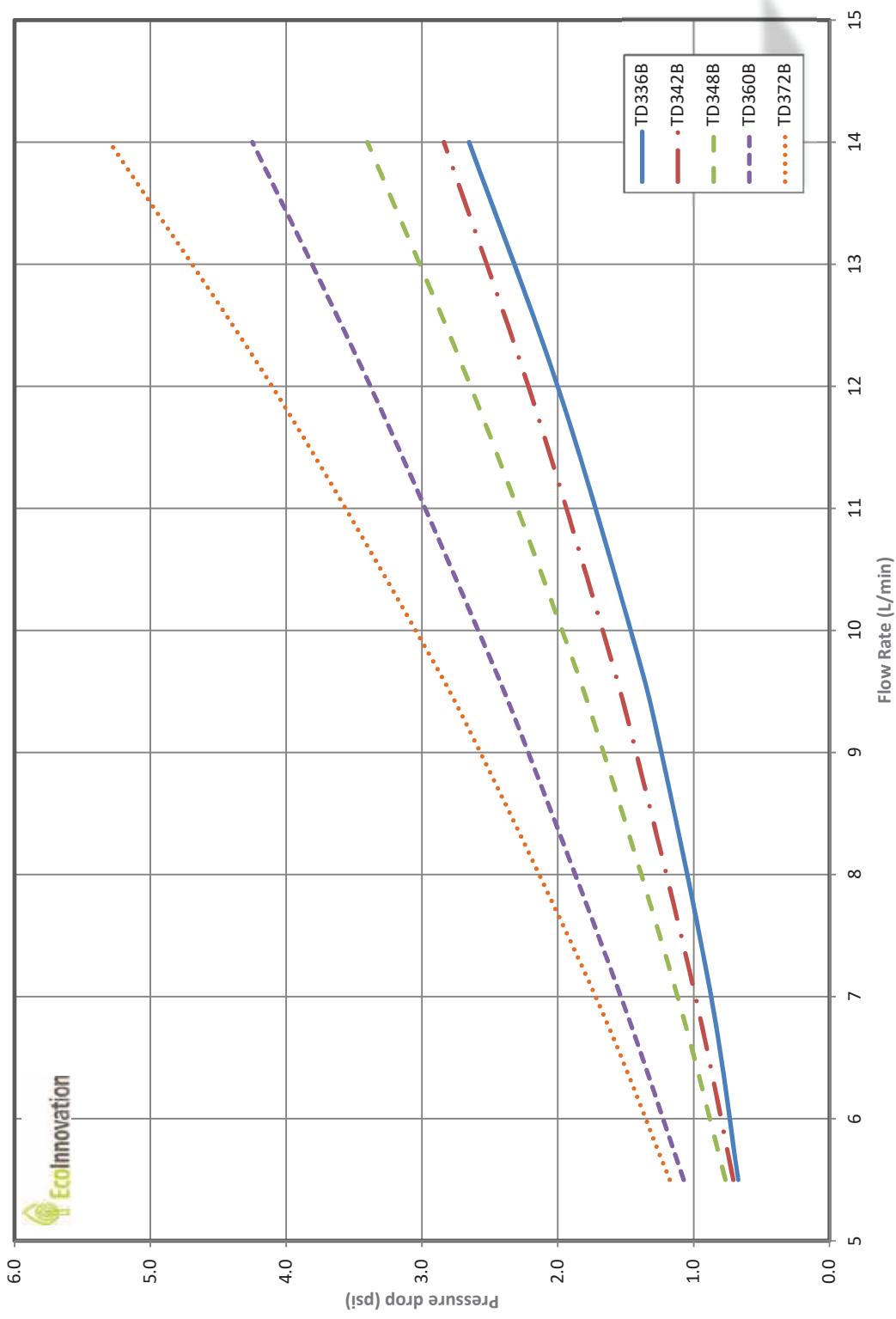
## 3" diameter specification sheet

*Recovered energy vs water flow rate*



## 3" diameter specification sheet

Pressure drop vs water flow rate



### 3" diameter specification sheet

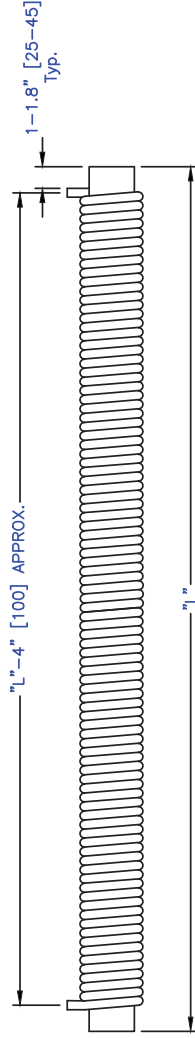
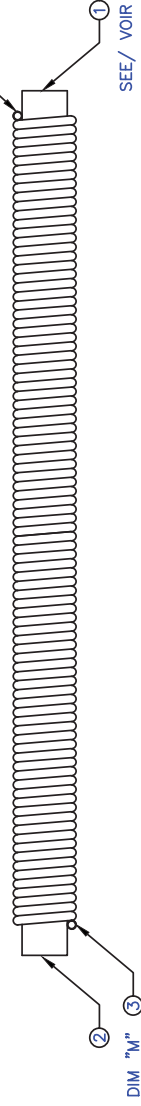
**NOTES:**

- 1-THE DRAIN SECTION IS MADE FROM "COPPER DRAINAGE TUBE DWV" ASTM 306
- 1-LA SECTION DE D'EAU POTABLE EST COMPOSÉE D'UN TUBE "COPPER DRAINAGE TUBE DWV" ASTM 306 EN CUIVRE
- 2-THE POTABLE WATER COIL IS MADE FROM TYPE "L" "SEAMLESS COPPER WATER TUBE" ASTM B-88
- 2-LA SECTION D'EAU POTABLE EST COMPOSÉE DE TUBE TYPE "L" "SEAMLESS COPPER WATER TUBE" ASTM B-88 EN CUIVRE
- 3-PEX FITTING IS CSA B137.5 ET ASTM F1807
- 3-RACCORD PEX CSA B137.5 ET ASTM F1807
- 4-UNIT MUST BE INSTALLED VERTICALLY. MAX. ALLOWANCE IS 1/8" (3mm) PER LINEAR FEET.
- 4-L'INSTALLATION DOIT SE FAIRE DE MANIÈRE À CE QUE L'UNITÉ SOIT DANS UNE PENTE MINIMALE DE 1/8" (3mm) PAR PIED LINÉAIRE DE LA VERTICALE
- 5-GENERAL TOLERANCES ±1/4" (7mm)
- 5-TOLÉRANCES GÉNÉRALES ±1/4" (7mm)
- A-STOCK LENGTHS SHOWN. INDICATE OTHER LENGTH AS REQUIRED - 6" to 100"
- A-LONGUEURS EN INVENTAIRE. INSCRIRE LA LONGUEUR REQUISE - 6" À 100"

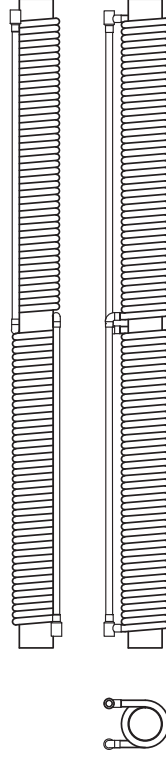
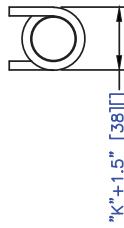
MODEL/MODELE :		TD							
SERIES/SÉRIE	DRAIN DIA. "K"	LENGTH/LONG. "L"	TUBE DIA. & TYPE "M"	NB SECTIONS	OPT. CONNECT/RACCORD				
	3" (75mm)	36" (914mm)	A=1/2" COP (12mm)	- (DEFAULT 1)	- (DEFAULT= "M")				
	4" (100mm)	40" (1016mm)	B=3/4" COP (19mm)	2	B=3/4" FEM (19mm)				
	6" (152mm)	42" (1067mm)		3	C=1" FEM (25mm)				
		48" (1219mm)			D=1-1/4" FEM (32mm)				
		60" (1524mm)			E=1-1/2" FEM (38mm)				
		72" (1829mm)			PEX=3/4" PEX (19mm)				

SEE/VOIR Note A

④ DIM "M"



CONFIG. 1 SECTION



CONFIG. MULTI SECTIONS (EX. 2) (NTS)

POS.	DESCRIPTION
1	DRAIN INLET / ENTRÉE DU DRAIN
2	DRAIN OUTLET / SORTIE DU DRAIN
3	FRESH WATER INLET / ENTRÉE EAU POTABLE
4	FRESH WATER OUTLET / SORTIE EAU POTABLE

PROJECT / PROJET:	DATE:
APP:	ECOMMUNATION TECHNOLOGIES INC. 231 RUE STE-MARIE, ST-Louis-DE-GONZAGUE, QC, J0S 1T0 T. 1-888-881-7693 F. 1-888-889-1135
4 28/09/18	ADDED PEX TYPE FITTING, NOTE 3
3 30/01/14	GENERAL REVISION
2 02/03/13	GENERAL REVISION
REV DATE	MODIFICATION
BY/FAÉ	TYPE
TITLE: SHOP DRAWING DESSIN D'ATELIER	
DRAWING NO.:	THERMODRAIN SERIES
1:8	1:8
5	5
1/1	1/1

